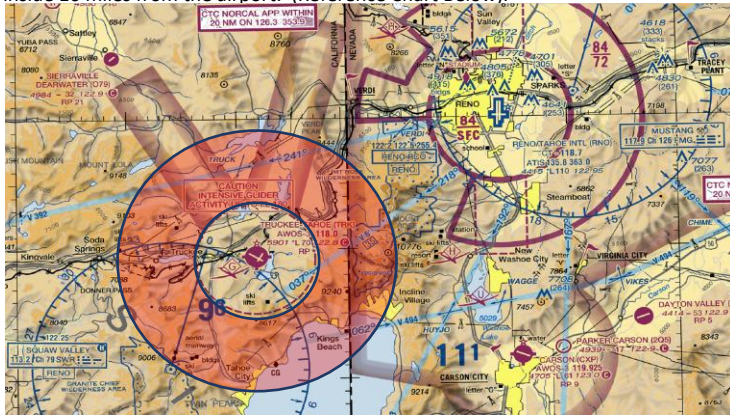


GENERAL

- ✓ All communications with the tower must be on 120.575.
- ✓ All communications with Ground Control must be on 118.3
- ✓ Internal glider communications will be conducted on 123.3.
- ✓ After airborne, maintain a listening watch on tower frequency 120.575 below 10,000 ft., MSL and inside 10 miles from the airport. (Reference Chart Below).



- ✓ Establish and maintain contact with the tower on 120.575 when within 5 NM. of the airport and below 2,500 ft. AGL or 8,400 MSL.

DEPARTURES

- ✓ Tow pilot shall request clearance to enter runway for staging from the Tower.
- ✓ Glider will report "rope tight, glider (call sign) ready for takeoff".
- ✓ The tow pilot must announce their intentions for climb out. The tow pilot must hear the words, "**Glider Tow Plane (Call Sign) cleared for takeoff**", before beginning takeoff roll.

ARRIVALS

- ✓ Call the Truckee Tower when 10 miles from the airport
- ✓ **Glider Pilot Phraseology – Truckee Tower, Glider (ex. N 33G) 10 miles NE of Truckee for landing.**
- ✓ On passing over the "lone pine tree" (initial pattern entry point for runway 20 at 7000 feet MSL, contact Tower and state:
 - ✓ **Glider Pilot Phraseology - "Truckee Tower, Glider (ex. 33G) entering left downwind for runway 20 at Truckee".**
- ✓ From the initial point, gliders are committed to the traffic pattern – no soaring or other maneuvers are permitted once in the traffic pattern.
- ✓ If you have an emergency or have a special request, inform the tower in plain language with your request.
 - ✓ **Glider Pilot Phraseology - "Truckee Tower, Glider (ex. 33G) request.....".**
- ✓ When turning base, check for incoming power traffic and report
 - ✓ **Glider Pilot Phraseology - "Truckee Tower, Glider (eg. 33G), turning left base to short final for runway 20."**
- ✓ NOTE: If you don't think you will stop short of Runway 11/29 intersection, advise Tower for the need to use full length of the runway
- ✓ If you have an emergency or due to glider performance issues, and need to land on another runway, be sure to make the request to the tower.
- ✓ Immediately clear the runway after landing and report to the tower,
 - ✓ **Glider Pilot Phraseology - "Glider (Call Sign) clear of runway 20."**